



DANPA SHADE

# Aura

Translucent  
Shading System

**Shade  
with style.**



SHADING

**Danpal**<sup>®</sup>  
Light Architecture

NORTH AMERICA

Introducing

# DANPA SHADE Aura

Our **translucent shading system** is designed to give any structure an all-encompassing HQE (high-quality environment). This ultrasmart design replaces the need for a more costly mechanical sunshade system.

The unique Z-Frame internal structure utilizes a zigzag like design that limits glare and solar radiation, while still permitting sufficient natural light. DanpaShade **Aura** also transforms dull shade into welcoming illuminated shade. And because our sunshades are bespoke, you can determine the color and opacity of the illuminated shade.

The Z-Frame design also utilizes Shade-Shift technology that filters daylight as the sun traces the sky, providing perfect ambience throughout the day. When you shade with style you can enjoy a comfortable, light controlled interior and an awe-inspiring exterior.

## Shade with comfort.



### Temperature control.

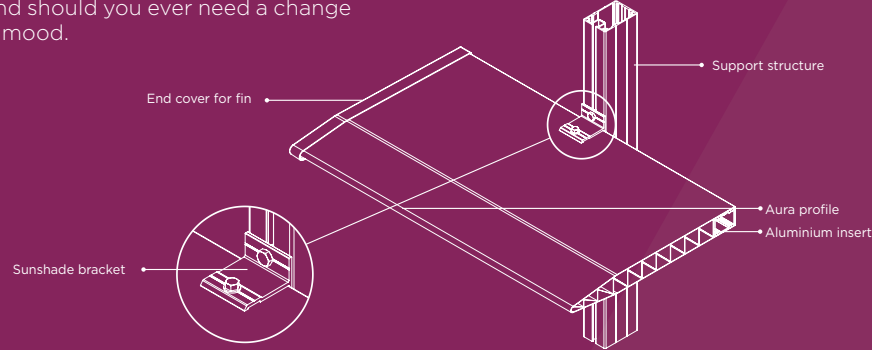
Keep cool in summer and comfortable in winter without relying so heavily on your HVAC system. **Aura's** energy efficient system helps your building to reduce solar radiation and reflect your style with one shading solution.

## Shade with the times.



### Retrofit or future-fit your building.

The featherweight construction of the **Aura** system can be elegantly retrofitted to almost any building without damage to the building's façade. And should you ever need a change of style, simply switch out the sunshades and reset the mood.



## Shade with impact.



### Any two colors you desire.

Make a statement with **Aura's** revolutionary shading solution. The fin-shaped panel carries two alternating colors and textures specified to your unique choice.

Experience a color-shift effect that brings the building to life. As your viewing angle changes, the colors blend to give your structure a fresh look every time.

## Shade and upgrade.



### Optimized daylight.

Upgrade your building's interior and soak up the aura of the improved atmosphere. The upgraded high-quality environment is achieved when sunlight is filtered through our advanced Z-Frame internal panel structure. Most of the harsh sunlight is blocked by the angled opaque fin, while a small amount of light is allowed through via the alternating vertical translucent fin. Once the natural light enters the interior, the quality of light is transformed and controlled into a welcoming diffused hue.

## Shade your way.



### Horizontal or vertical.

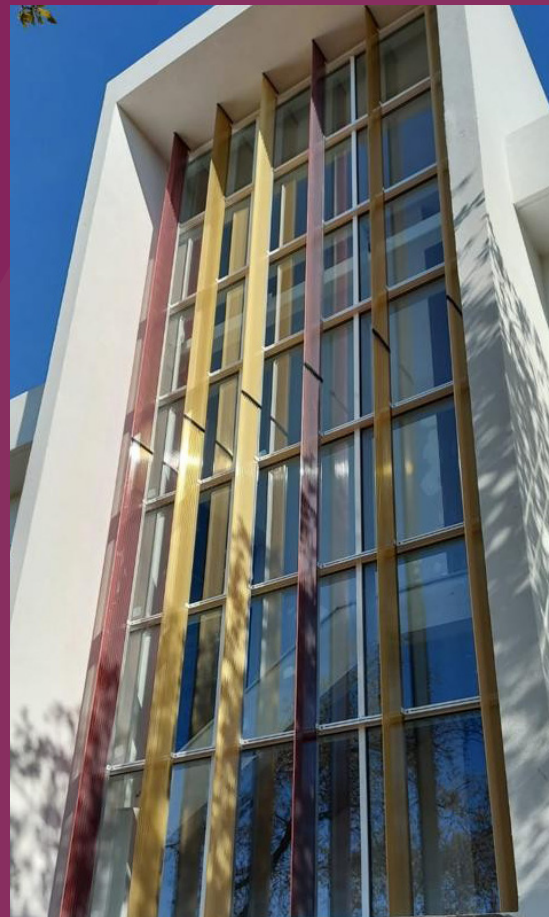
There's more than one way to style a building. DanpaShade's **Aura** system can be installed horizontally, vertically or both, on the same building. To add that extra touch, **Aura's** aluminium bracket fittings enable each fin to be installed at three separate angles; 90°, 45° and 22.5°.

## Shade with care.



### Going green should never go out of style.

DanpaShade **Aura** lowers a building's heat without curbing the benefits of natural light, thus reducing the use of air conditioning and electric lighting. We'll help you achieve the latest green building standards or governmental building efficiency regulations and set you on the path to having a Net-Zero building.

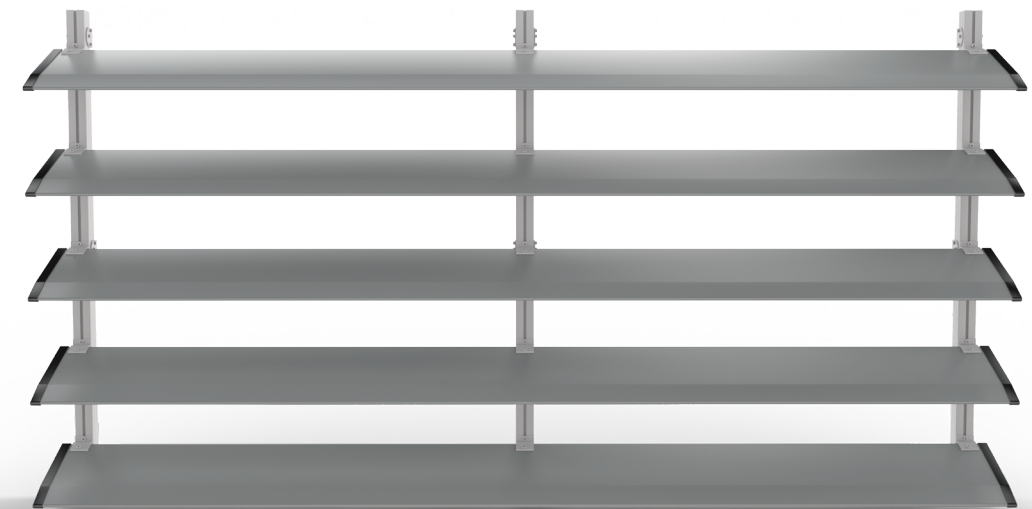
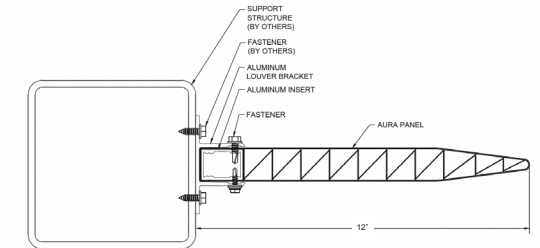


# Shade with color.

Contact us for our full Aura color palette.



DESCRIPTION	TEST STANDARD	RESULTS
Self-Ignition Temperature	ASTM D1929	> 650 °F
Rate of Burn and/or Extent	ASTM D635	CC1 Rating; <1in/min
Density of Smoke	ASTM D2843	< 75%
Structural Performance - Single Span	AAMA 514 (static loading procedure)	Up to 40psf
Structural Performance - Multi Span	AAMA 514 (static loading procedure)	Up to 40psf



Temperature control



Retrofit or future-fit



Multiple colors at one time



Horizontal or vertical



Optimized daylight



Going green



[www.danpal.com](http://www.danpal.com)

Danpal North America | 3959 Bur Wood Drive, Suite 400 Waukegan, IL 60085 | 312-724-8166

