

DANPAL® LOUVRE SYSTEM

DANPA SHADE

Translucent
Shading System



SHADING



NORTH AMERICA

MAXIMUM CONTROL OVER LIGHT AND HEAT

DANPAL® DANPASHADE IS A TRANSLUCENT SHADING SYSTEMS THAT PROVIDES MAXIMUM CONTROL OVER LIGHT AND HEAT WITH COMPLETE UV PROTECTION. AVAILABLE IN A WIDE VARIETY OF COLORS, FINISHES AND EFFECTS, IT CREATES BOTH VISUAL AND CLIMATIC BENEFITS TO NEW OR REFURBISHED BUILDINGS.

Play with light, shade and color

Users can adjust the sunshades to create their desired balance of light and shade, achieving the right atmosphere.

The Danpal® DanpaSHADE translucent shading system can be installed on various types of building envelopes in a variety of colour combinations and finishes - stretching your imagination to the limit.

All-weather design

It is suitable in all weather conditions and compliant with building code requirements

Made with Microcell technology, the latest and most advanced system for architectural shading applications, Danpal® DanpaSHADE Systems offer high impact resistance. The system contains snap-on interlocking dry-glazed connectors made of aluminium - providing simple and low cost installation.



SUPERIOR LIGHT AND VISUAL APPEARANCE

THE PANEL'S UNIQUE STRUCTURE TRANSMITS AN EVEN DIFFUSION OF NATURAL LIGHT, PRODUCING A RICH LOOK

Specifically designed for architectural daylight applications, the tight spacing between the ribs produces a superior quality of light and an aesthetically appealing presence. Customers can select various colors and light transmission levels, with either a glossy or matt surface finish.

High Resistance

The system provides a double tooth grip-lock connection that ensures extended longevity even when subject to high wind loads.

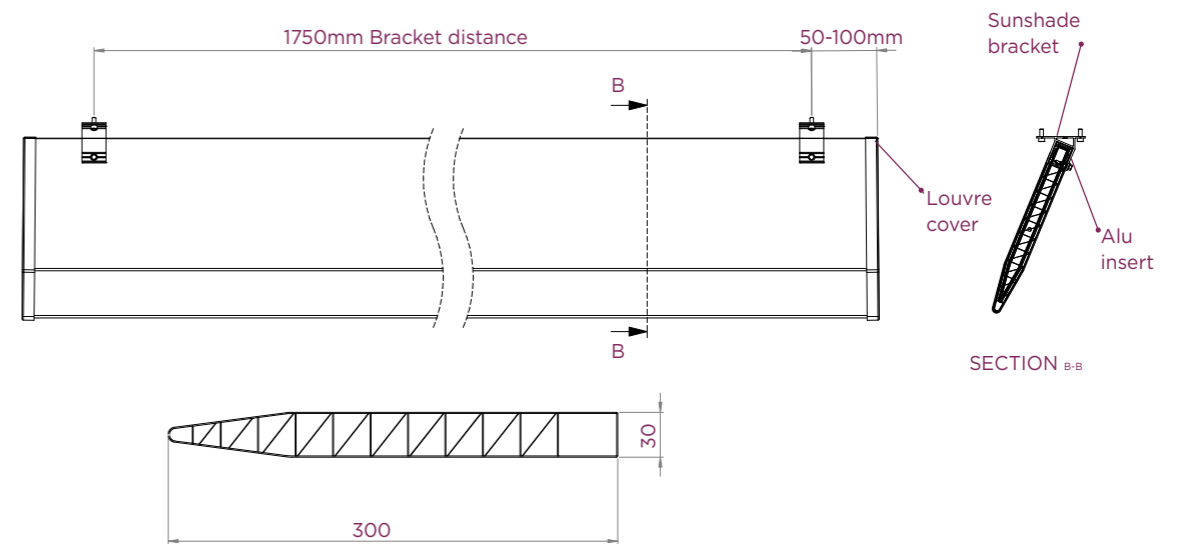
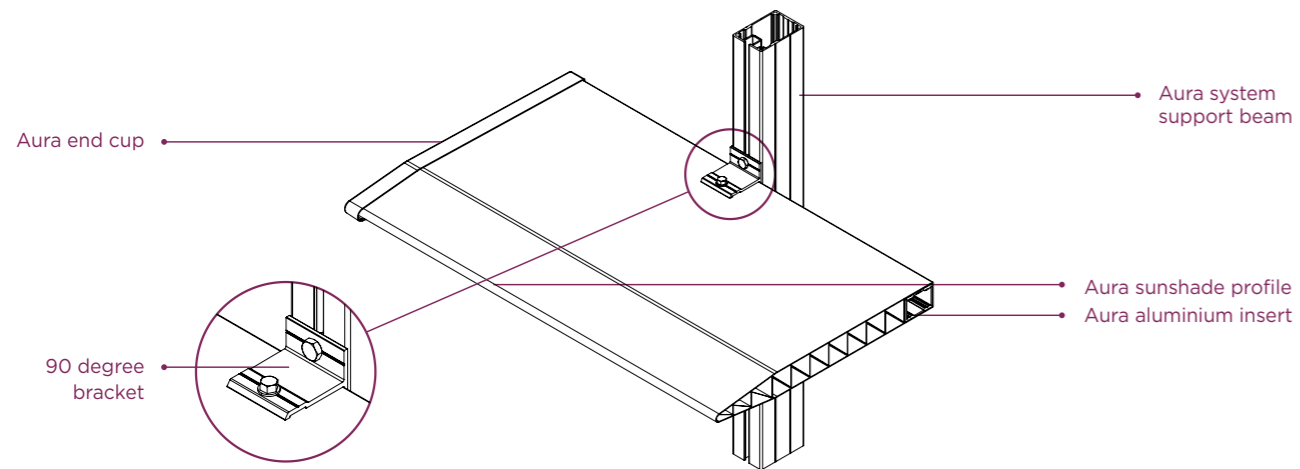
Extended UV Protection

Danpal® panels offer co-extruded UV protection - resulting in longer system life.



WIDE VARIETY OF COLORS AND FINISHES TO SPARK YOUR IMAGINATION

DANPA SHADE AURA SYSTEM



TECHNICAL INFORMATION

DIMENSIONS

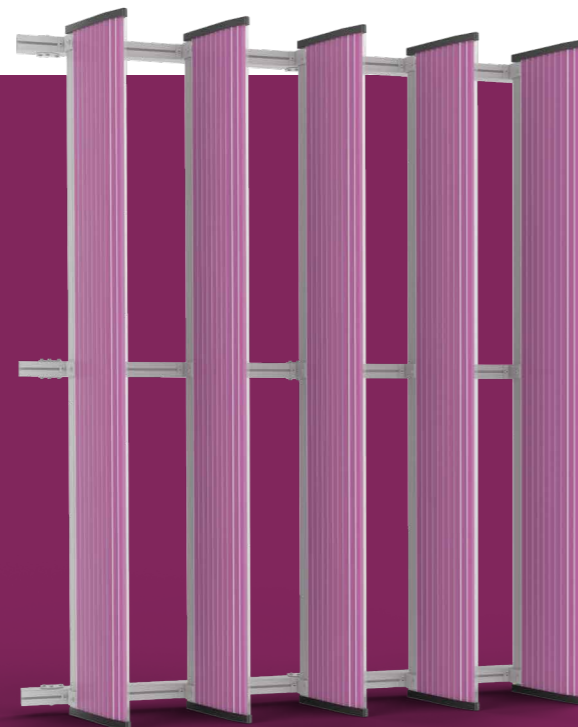
WIDTH	THICKNESS	WEIGHT	WEIGHT	PITCH OPTIONS	MAX LENGTH
300mm 12in	30mm 1.18in	1,000 g/m 0.67 lbs/ft	3,000 g/m ² 0.61 lbs/ft ²	22.5°, 45°, 90°	6 meters 19.8 feet

* 3 louvers per 1 meter

PROPERTIES

MODULE	RESULT
Maximum distance between brackets	1750mm 68.8in
Distance between Sunshades	330mm 12.9in
Maximum distance from end of sunshade to bracket	50 - 100mm 2 - 4 in

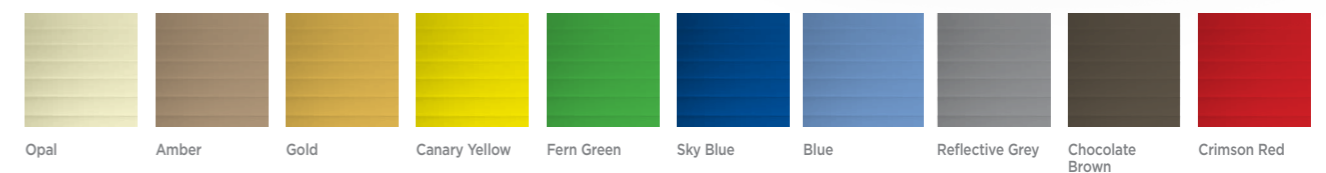
* Contact Danpal for project specific sunshade spacing



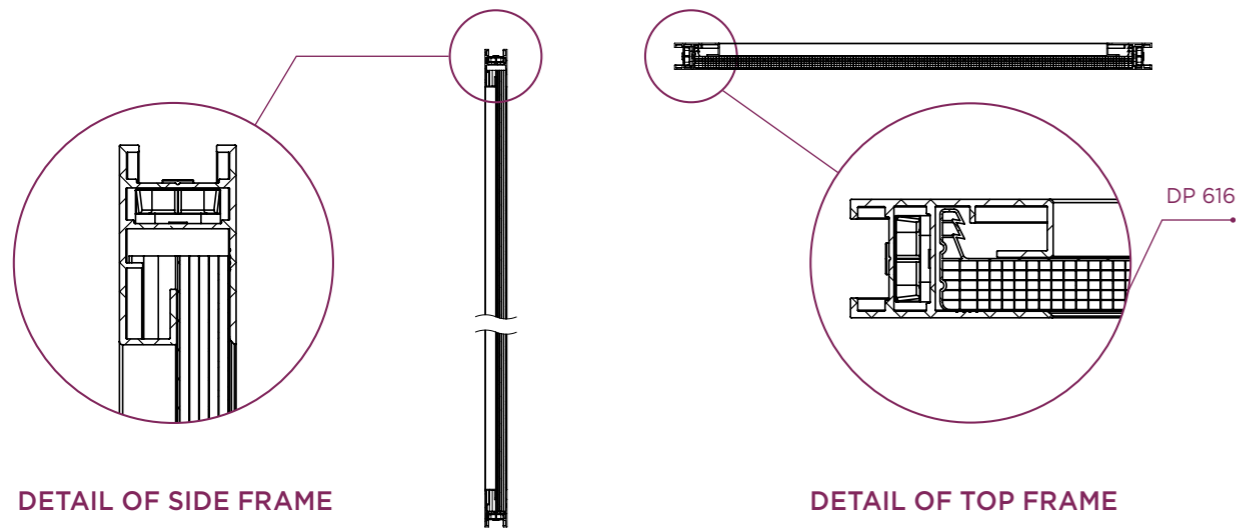
SYSTEM BENEFITS

- Unique 3D KINETIC internal structure
- Dual internal color options
- Vertical or horizontal installation
- Variable light transmission & shading
- Featherweight

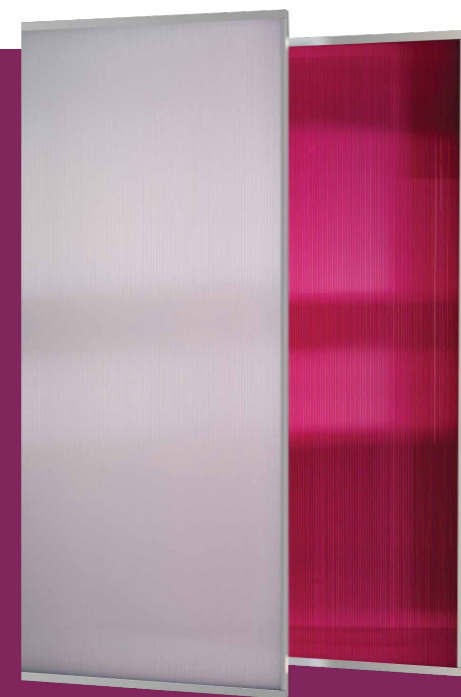
COLOR WITH SHADE



DANPA SHADE UMBRA SYSTEM



Encounter Lutheran College, Australia
Danpal® Louvre System
Architect: Arkvale



SYSTEM BENEFITS

- Lightweight
- Wide range of colors and finishes
- Quick, easy and cost effective installation
- Recyclable materials
- Fully adjustable and compatible with building automation systems

Jungnang Bangjunggwan Education Center, South Korea | Danpal® Louvre System | Architect: Studio D lab

TECHNICAL INFORMATION

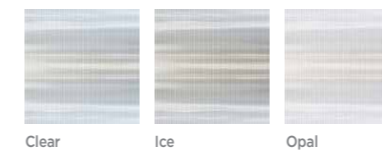
TECHNICAL FEATURES

MODULE	616, 3DLITE, KINETIC	STANDARD
Reaction to fire	B-s1,d0	Norm NF EN 13501-1 : 2002 P.V LNE M071009 - DE/5 ; DE/9
Flame Spread	Class A	ASTM E84
Smoke Density Ignition Rate of Burn	CC1	ASTM D2843 ASTM D1929 ASTM D635
Acoustic	As per panel characteristics	CSTB : AC08-26013441/1 et AC08-2613441/2.
Light transmission	As per panel characteristics	norm ASHRAE- 74-1988.
10 year warranty	Yes	
Impact and shock resistance	Pass	PV CSTB GM 89/10 , PV CSTB GM 94/2
Finishes of panel	Low E, softlite, HP	

* Danpal is engaged in constant innovation. We reserve the right to modify our products, specifications and test data. Contact Danpal Technical Support for the most up to date information.

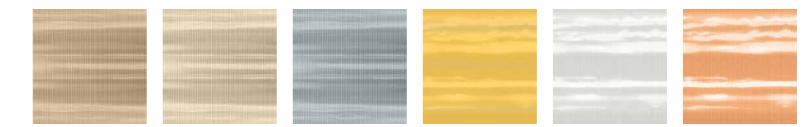
LET OUR COLORS INSPIRE YOU

SHADES OF WHITE



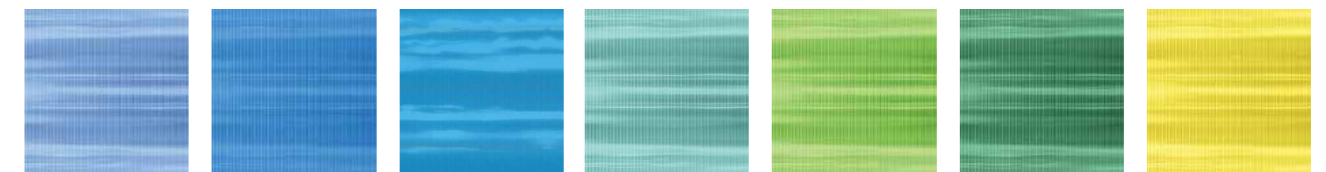
Clear Ice Opal

METALLIC

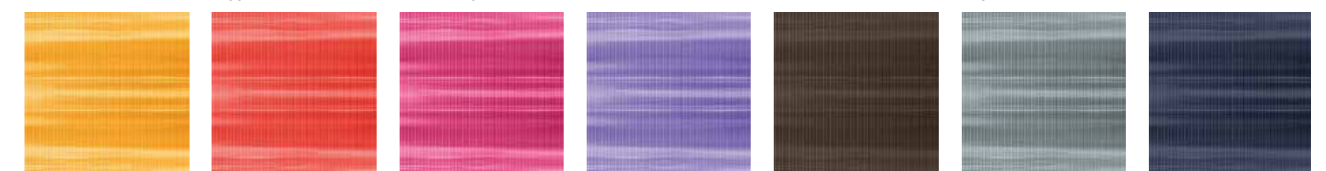


Amber Bronze Reflective Grey Gold Metallic Ice Copper

COLORFUL

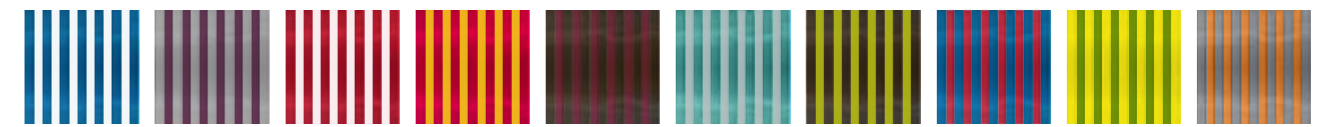


Blue Sapphire Blue Blue Arctique Green Lime Green Empire Green Yellow



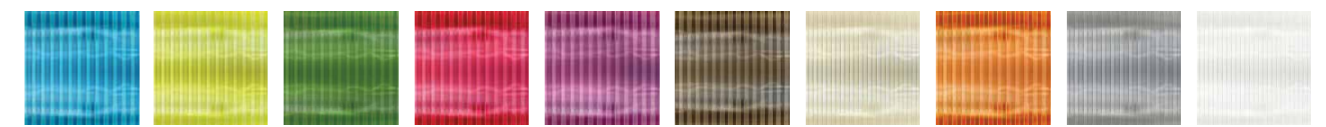
Orange Red Magenta Purple Brown Grey Black

KINETIC

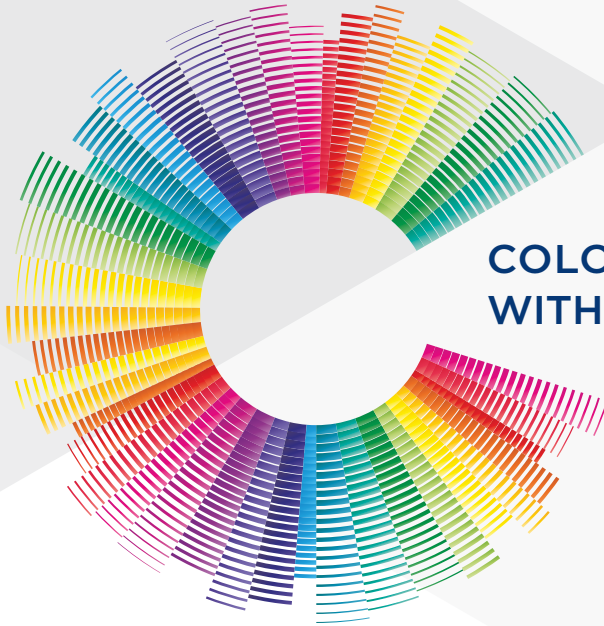


White | Sky Blue Violet Purple | Mist Grey White | Crimson Red Canary Yellow | Magenta Violet Purple | Chocolate Brown Dove Grey | Turquoise Citrus Green | Chocolate Brown Crimson Red | Sky Blue Fern Green | Canary Yellow Signal Orange | Thunder Grey

3DLITE



Sky Blue Citrus Green Fern Green Crimson Red Violet Purple Chocolate Brown Ivory Signal Orange Thunder Grey White



COLOR YOUR ATMOSPHERE WITH THE DANPAL® PALETTE

ABOUT THE COMPANY

Innovative light architecture systems for building envelopes

Danpal® are creators of exceptional light-transmitting architectural systems for building envelopes, providing optimal solar and thermal comfort.

For 50 years, our innovative systems have helped architects to transform light (both natural and artificial) into a powerful and versatile tool, for architectural creations that are internally and externally radiant.

An industry visionary, Danpal® are originators of the Danpalon® translucent panel standing seam system - a light architecture solution used around the world in commercial, education, transport, health, sports and high-tech projects.

Today, the company offers complete systems - providing total solutions for the building envelope. Danpal® designs, manufactures and distributes an unmatched range of daylighting systems for all types of building requirements - from Façades, cladding, roofs, Skylight, shading, to interior and outdoor applications.

Danpal® systems are built around innovative technologies, deep architectural know-how and the ever evolving needs of our clients. Operating in five continents, Danpal® inspires architectural creativity with its rainbow of light architecture solutions.

Danpal® Louvre is an integral part of Danpal's range of systems - giving you a complete solution



FAÇADE



CLADDING



SKYLIGHT



OUTDOOR



SHADING



INTERIOR

www.danpal.com

Danpal North America | 3959 Bur Wood Drive, Suite 400 Waukegan IL 60085 | 312-724-8166

