



DANPAL® VRS
Ventilated Rainscreen System



CLADDING



NORTH AMERICA

VENTILATED RAINSCREEN SYSTEM



SUSTAINABLE CLADDING SOLUTIONS FOR NEW AND EXISTING BUILDINGS



Danpal VRS system is a ventilated rainscreen utilizing the unmatched range of Danpalon panels. The system is designed to improve energy efficiency, building performance and prevent thermal bridging.

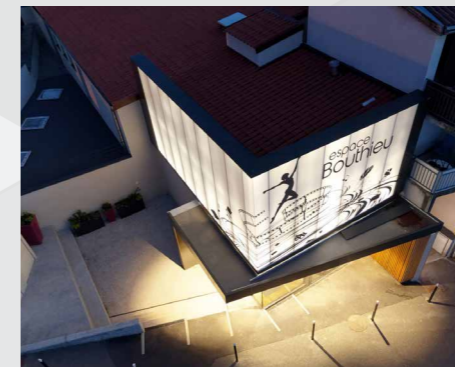
Improve building performance

Buildings account for around 40% of primary energy consumption .

Therefore, insulation is critical. The principle of Danpal® VRS is to provide rainscreen system incorporating the trusted Danpalon® panel that allows for continuous insulation when required.

Ventilation maintains insulation efficiency

Based on natural ventilation by means of a ventilated air gap, the convective motion behind the panels keeps the insulation dry and maintains its efficiency over time.



Light but solid cladding

Danpal® VRS is made of connector-bound microcell polycarbonate panels that are three times lighter than traditional rainscreen cladding.

Simple & rapid installation

Connections are made directly on the support, eliminating the need for additional supporting framed structures.

Rainscreen Design

Rain screen design provides a cavity between the Ventilated rainscreen and the structure of the wall. This cavity allows for drainage of any water which may penetrate the cladding and an air space to promote drying

A universal concept

The Danpal® VRS connectors attach to the building in a way that is compatible with most types of structures.

Wide range of hues for endless creativity

Available in various shades, from sparkling to bright, opaque, metallic, bi-color, shiny or matte (Softlite finishing), Danpal® VRS clads your building in the light and reflections you choose.

DANPAL® VRS PROVIDES BUILDINGS WITH A NEW, REVITALIZED APPEARANCE



Housing Pen Ar Creach, France | Danpal® VRS
Architect: A3 Argouarch Architectes Associes



Pharmacie et Cabinets Medicaux de Valasse, Gruchet le Valasse (76), France | Danpalon® Bardage (BRV) |
Architect: Atelier Bettinger Desplanques architectes

EASY AND ECONOMICAL INSTALLATION

Danpal's VRS solution has been developed for easy and economical installation. It is up to three times lighter than traditional laminated cladding, uses the trusted Danpalon® connection system and can be installed on all types of supports.

Danpal® VRS brackets can be attached directly to the load bearing wall, Continuous Insulation system or structural supports without the need for an additional framing.

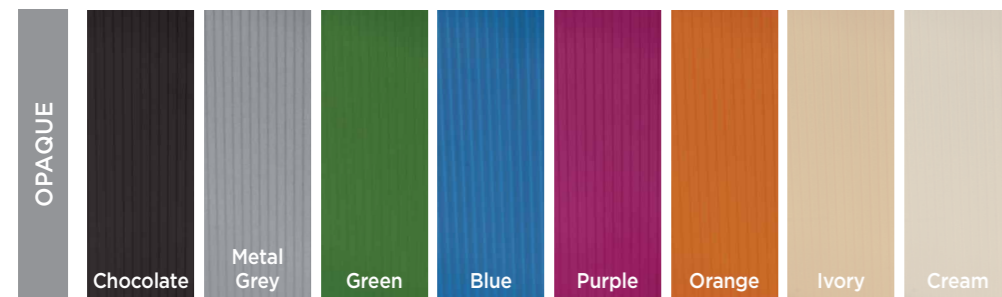
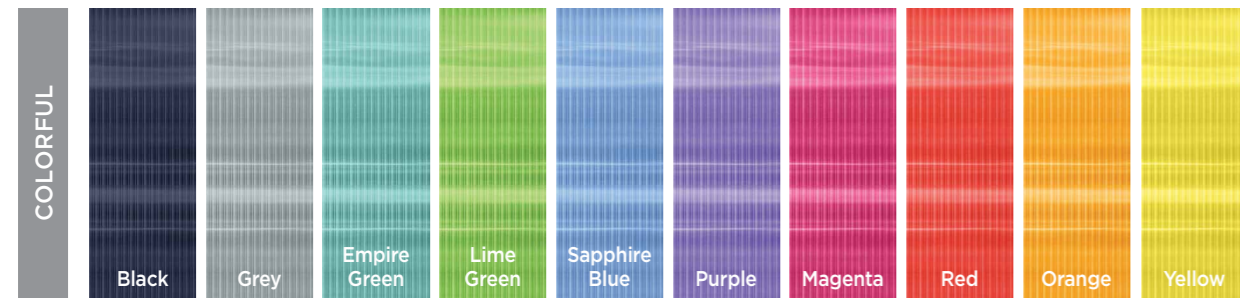
SYSTEM BENEFITS

- Lightweight
- Quick, easy and cost effective installation
- Unparalleled choice of designs and colors
- Standard panel lengths of 39 feet. (longer panels available upon request)
- Environmentally friendly
- No waste

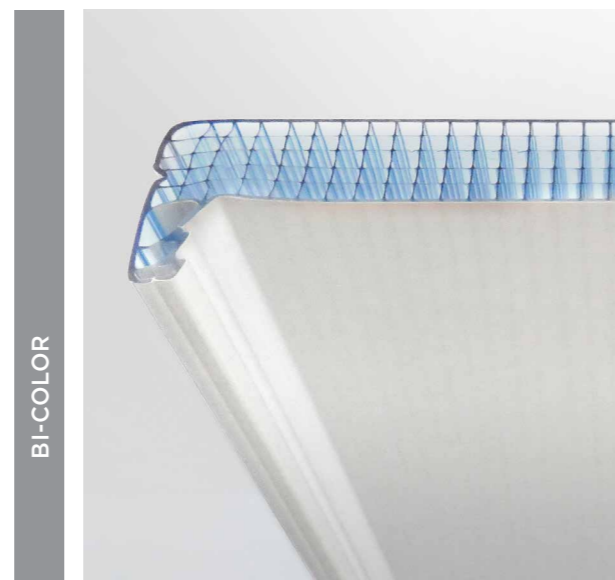


1. Wall structure
2. Insulation material
3. Connector
4. Wall brackets
5. Danpalon® panel
6. VRS polycarbonate external corner
7. Angled wall bracket to support external corner
8. Aluminium internal corner

BRINGING YOU BRILLIANT LIGHT, REFLECTIONS & COLORS



For bright color with a metallic, lacquered appearance, choose the opaque panels available in a wide range of tints. With Danpal®'s translucent range, the appearance of the building changes with the light and reflections projected onto the Façade at different times of day.



Our special bi-color option makes refracted light-effects possible, creating a unique 3-dimensional look to your cladding. The panels are available in the colors of your choice and are intended for use, with our Danpal VRS cladding system.



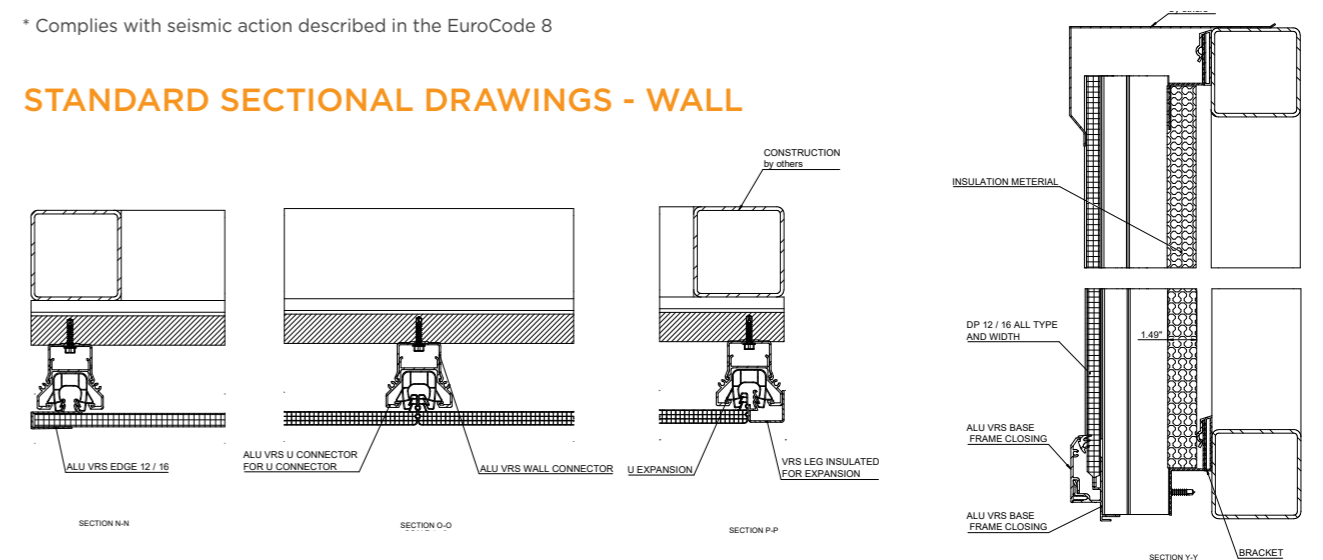
ZIP Hotel, Korea | Sapphire Ice & Leisure Centre, UK | Youngwol Eco Park Bio Industry Center, Korea

TECHNICAL FEATURES

	DANPAL® VRS / 16 MM	DANPAL® VRS / 12 MM
Installation module	600mm (23-5/8") 900mm (35-7/16") 1040mm (40-15/16")	600mm (23-5/8") 900mm (35-7/16")
Flame Spread - ASTM E84	Class A	
Smoke Density - ASTM D2843 Ignition Temperature - ASTM D1929 Rate of Burn - ASTM D635	CC1	
Warranty	10 years	
Impact and shock resistance	PV CSTB CLC 09-26019639	
System weight (panels + connectors)	Frame 600 mm	5.0 kg/m ² (1.02 lbs/sqft)
	Frame 900 mm	4.5 kg/m ² (0.92 lbs/sqft)
	Frame 1040 mm	4.1 kg/m ² (0.84 lbs/sqft)
Technical agreement	ICC-ESR 5022 CSTB Technical Assessment 2/13 1552	
Special finishes	Pearl, LowE, HP, Softlite	

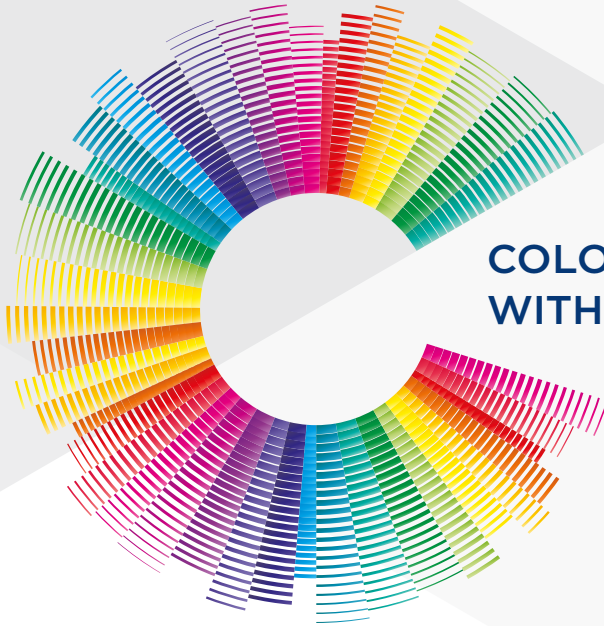
* Complies with seismic action described in the EuroCode 8

STANDARD SECTIONAL DRAWINGS - WALL



- Danpal® VRS is an innovative system that requires a continuous ventilation space of at least 2 inches between the internal side of the Danpalon® panel and the insulation material or the supporting Façade.
- Ventilation sections should be designed into the sill and head sections to ensure constant airflow. These sections are calculated according to the Façade exposure, and the shade and thickness of the panels.
- Please discuss specific design requirements with our technical and design department.

* Danpal is engaged in constant innovation. We reserve the right to modify our products, specifications and test data. Contact Danpal Technical Support for the most up to date information.



COLOR YOUR ATMOSPHERE WITH THE DANPAL® PALETTE

ABOUT THE COMPANY

Innovative light architecture systems for building envelopes

Danpal® are creators of exceptional light-transmitting architectural systems for building envelopes, providing optimal solar and thermal comfort.

For 50 years, our innovative systems have helped architects to transform light (both natural and artificial) into a powerful and versatile tool, for architectural creations that are internally and externally radiant.

An industry visionary, Danpal® are originators of the Danpalon® translucent panel standing seam system - a light architecture solution used around the world in commercial, education, transport, health, sports and high-tech projects.

Today, the company offers complete systems - providing total solutions for the building envelope. Danpal® designs, manufactures and distributes an unmatched range of daylighting systems for all types of building requirements - from Façades, cladding, roofs, skylights, shading, to interior and outdoor applications.

Danpal® systems are built around innovative technologies, deep architectural know-how and the ever evolving needs of our clients. Operating in five continents, Danpal® inspires architectural creativity with its rainbow of light architecture solutions.

Danpal® VRS is an integral part of Danpal's range of systems - giving you a complete solution



FAÇADE



CLADDING



SKYLIGHT



OUTDOOR



SHADING



INTERIOR

www.danpal.com

Danpal North America | 3959 Bur Wood Drive, Suite 400 Waukegan IL 60085 | 312-724-8166

