



N O R T H A M E R I C A

PROJECT SPECIFICATIONS (PROVIDE NEW SHEET FOR EACH ORIENTATION AND/OR COLOR)

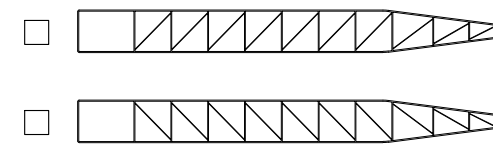
- ① SHADE ORIENTATION: VERTICAL HORIZONTAL
- ② SHADE ANGLE: _____
- ③ SHADE GLAZING COLOR: OUTSIDE SURFACE _____
STRAIGHT RIB _____
ANGLED RIB _____

- ④ ALUMINUM FINISH (for brackets and aluminum insert):
 MILL
 CLEAR ANODIZED (CLASS I)
 PAINTED (70% KYNAR)
COLOR _____



- ⑤ END CAP COLOR
 GRAY
 BLACK
 WHITE

- ④ PANEL ORIENTATION (TOP DOWN VIEW):
*FOR VERTICAL PANELS ONLY



⑥

| SHADE SCHEDULE ^a | | | |
|-----------------------------|----------|--------|---|
| ITEM # | QUANTITY | LENGTH | NO. OF BRACKETS PER LENGTH ^b |
| | | | |
| | | | |
| | | | |
| | | | |
| | | | |
| | | | |

^aattached additional sheets if more items are needed
^bmax span is 5ft at Wind Load of 40psf

PROJECT NUMBER: _____
PROJECT NAME : _____
PROJECT SHIPPING ADDRESS: _____

SHIPPING CONTACT NAME: _____
SHIPPING CONTACT PHONE: _____

GENERAL NOTES:

- THE CONTENT OF THESE DRAWINGS ARE THE SOLE PROPERTY OF DANPAL AND MAY NOT BE DUPLICATED WITHOUT WRITTEN CONSENT OF DANPAL.
- SURROUNDING MATERIALS AND PRODUCTS PROVIDED BY OTHER TRADES ARE NOTED IN THIS DRAWING SET FOR REFERENCE ONLY AND MAY NOT BE ACCURATE OR FINAL.
- INSPECT DANPAL MATERIAL WITHIN 24HRS OF RECEIPT. REPORT MATERIAL SHORTAGES OR DAMAGES IMMEDIATELY IN WRITING.
- ENSURE ALL OPENINGS OR SUBSTRUCTURES ARE SQUARE AND PLUMB PRIOR TO INSTALLATION OF DANPAL MATERIALS.
- IT IS THE RESPONSIBILITY OF THE CONTRACTOR AND/OR ENGINEER TO ENSURE THAT THE SUBSTRUCTURE MATERIALS THAT DANPAL'S PRODUCTS ARE ATTACHING TO CAN WITHSTAND ALL IMPOSED FORCES FROM ITEMS SUCH AS DEAD, SNOW, WIND, AND SEISMIC LOADS.
- DISSIMILAR METAL MATERIALS SHOULD BE ISOLATED FROM ONE ANOTHER TO PREVENT ELECTROLYTIC CORROSION.
- INSTALLATION INSTRUCTIONS SHOULD BE REVIEWED AND UNDERSTOOD TO ENSURE PROPER INSTALLATION OF DANPAL PRODUCTS.
- UNLESS OTHERWISE NOTED, ALL METAL FASTENERS ARE STAINLESS STEEL SERIES 300.
- UNLESS OTHERWISE NOTED, ALL ALUMINUM IS TO BE 6063-T5 ALLOY OR BETTER.
- ALL FINAL OPENING/SUBSTRUCTURE DIMENSIONS MUST BE VERIFIED OR GUARANTEED BY CUSTOMER BEFORE DANPAL CAN BEGIN FABRICATION OF MATERIALS.

SYMBOLS / ABBREVIATIONS:

- | | | |
|-------------------------|-----|-----------------|
| — DETAIL LETTER | NBD | NOT BY DANPAL |
| — SHEET NUMBER | NTS | NOT TO SCALE |
| — PIECE MARK | VIF | VERIFY IN FIELD |
| — DIMENSIONAL REFERENCE | N/A | NOT APPLICABLE |
| — REVISION MARK | CL | CENTERLINE |
| — WOOD BLOCKING | WP | WORKPOINT |
| — SHIM | SS | STAINLESS STEEL |
| | REF | REFERENCE |
| | TYP | TYPICAL |
| | SIM | SIMILAR |
| | REV | REVERSE |
| | SYM | SYMETRICAL |
| | FS | FRAME SIZE |
| | OC | ON CENTER |
| | OPP | OPPOSITE |
| | NOM | NOMINAL |
| | RO | ROUGH OPENING |

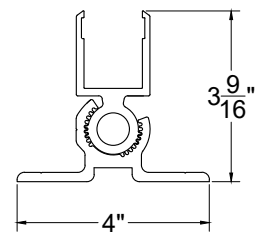
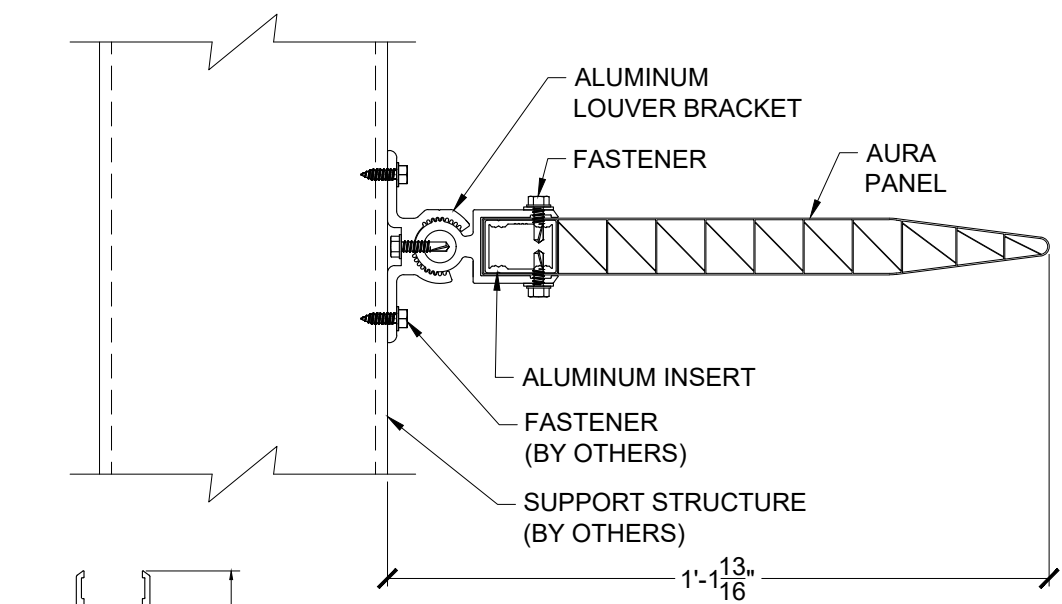
FINAL DIMENSIONS & MANUFACTURING RELEASE:

- BY SIGNING BELOW,
- I VERIFY THAT ALL DIMENSIONS OF SURROUNDING SUBSTRUCTURE OR ATTACHMENT MATERIALS ARE ACCURATE AND FINAL.
 - I APPROVE DANPAL TO PROCEED WITH FABRICATION AND AM AWARE THAT ANY CHANGES MADE TO DETAILS OR SIZES AFTER DANPAL'S RECEIPT OF THIS SIGNED FORM WILL RESULT IN ADDITIONAL CHARGES.

CUSTOMER SIGNATURE

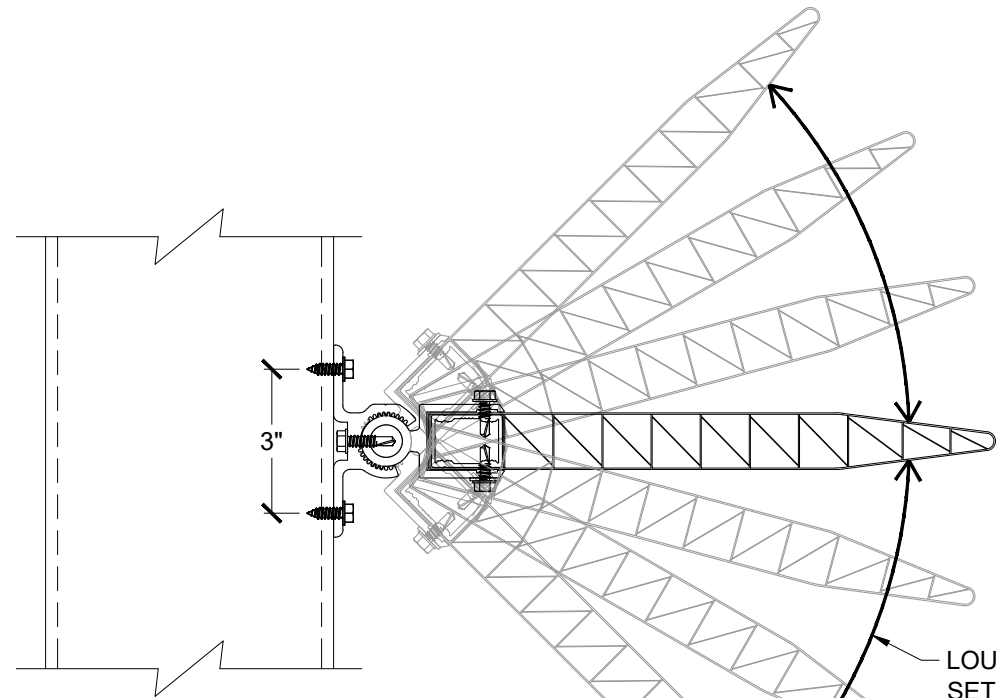
COMPANY

DATE

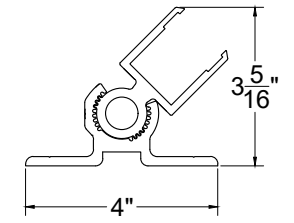
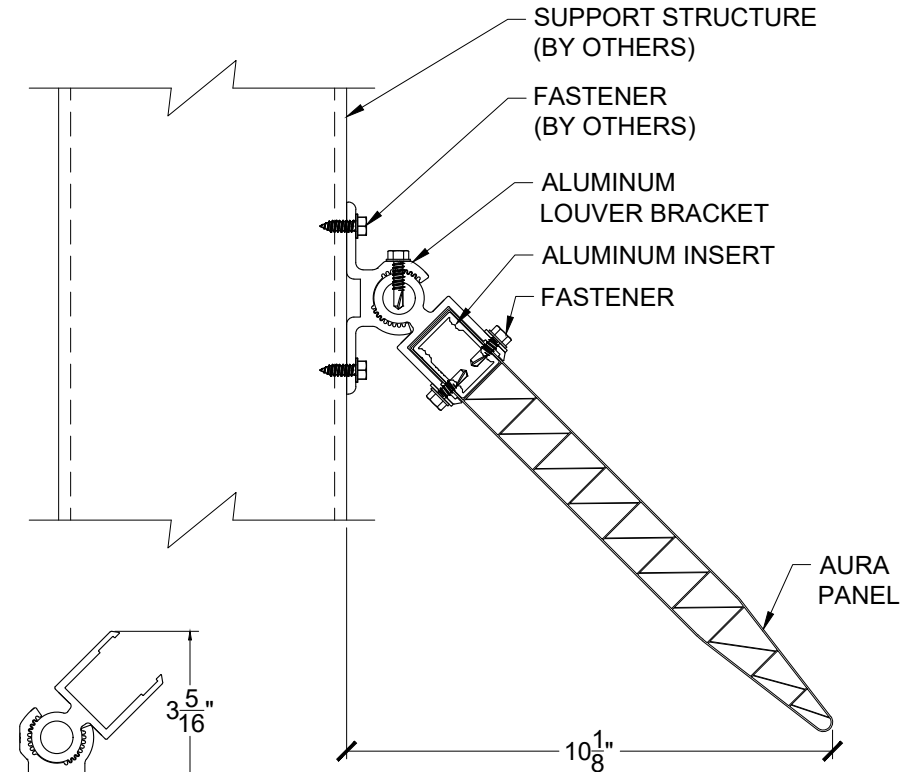


A 90° SHADE
Scale: 1:10

90° BRACKET DIMENSIONS

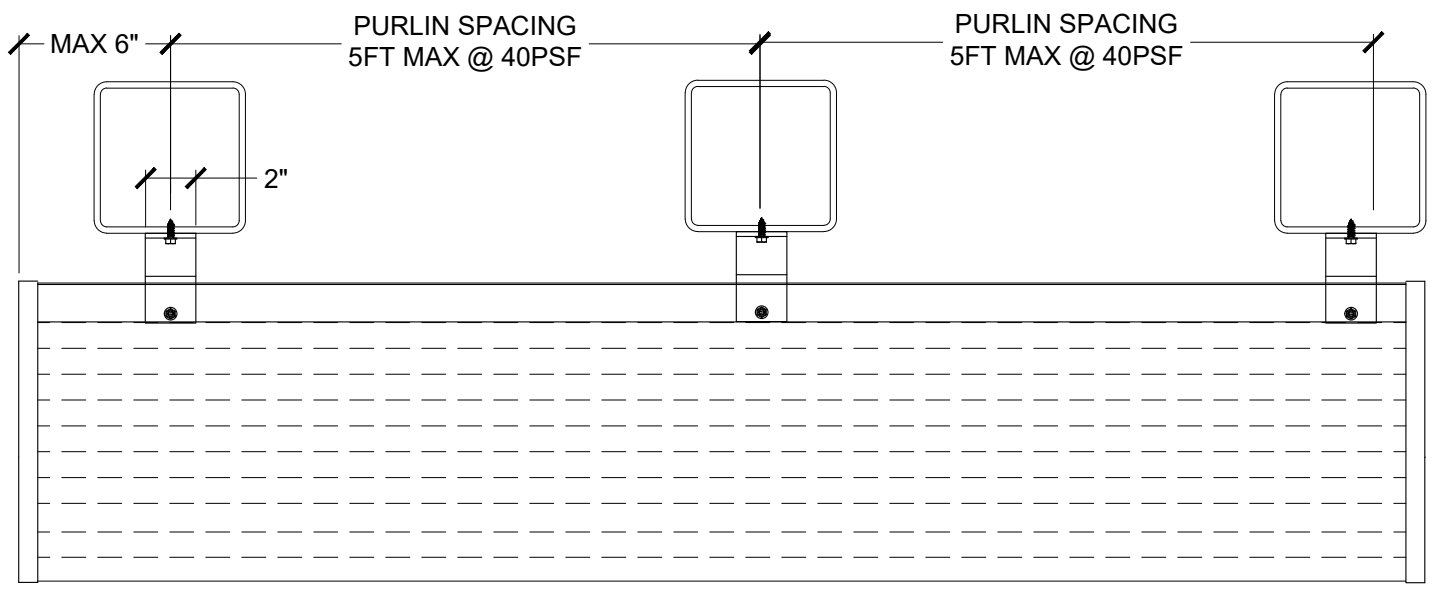


C LOUVER BRACKET ANGLES
Scale: 1:10



B 45° SHADE
Scale: 1:10

45° BRACKET DIMENSIONS



FASTENER RECOMMENDATIONS

| FASTENER | MATERIAL | MATERIAL THICKNESS (MIN) |
|---|-------------------------------------|--------------------------|
| 1/4-14 SS Cond A (T _{min} = 75ksi) | Aluminum, 6063-T5 | 0.188" |
| 1/4-14 SS Cond A (T _{min} = 75ksi) | Aluminum, 6063-T6 | 0.156" |
| 1/4-14 SS Cond A (T _{min} = 75ksi) | Steel Sheet, T _{min} 58ksi | 0.125" |

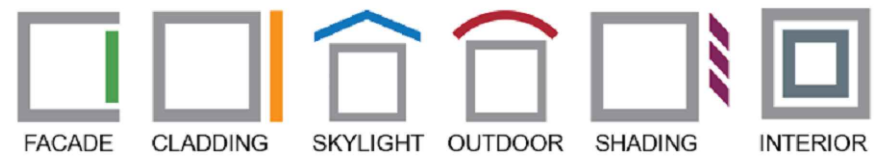


3959 Bur Wood Drive
Suite 400
Waukegan, IL 60085

312.724.8166

www.danpal.com

AURA SYSTEM
DETAILS



Note:
Details are for reference only and not to be used for submittal purpose as they can change without notice.

Please reach out to our Technical Services team for assistance with job specific detailing and engineering.

danpal-na@danpal.com